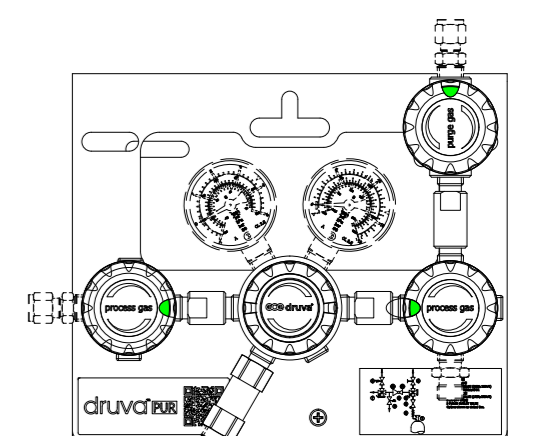
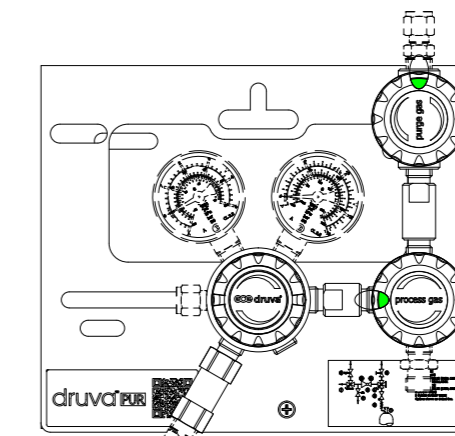


VERSIONS OVERVIEW

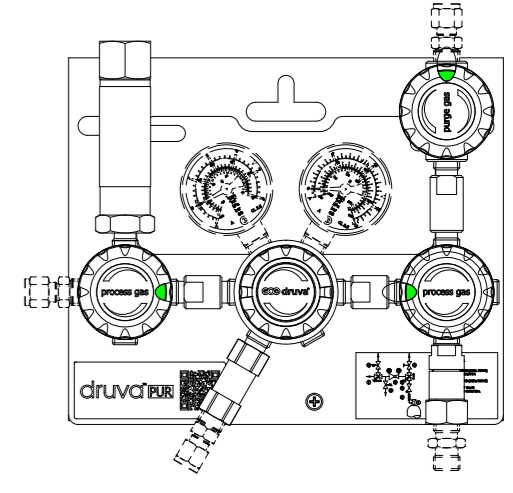
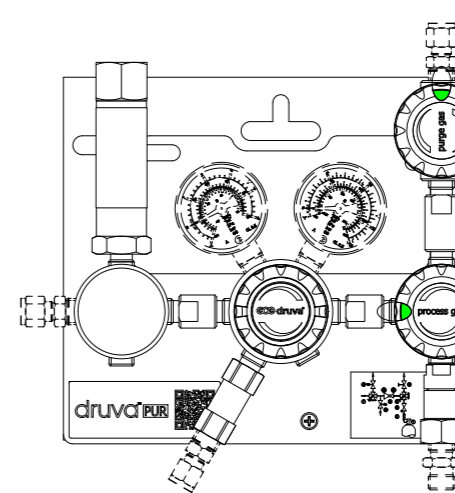
OPTION - P0 / SPECIAL - 0

OPTION - PS / SPECIAL - 0



OPTION - P0 / SPECIAL - U

OPTION - PS / SPECIAL - U



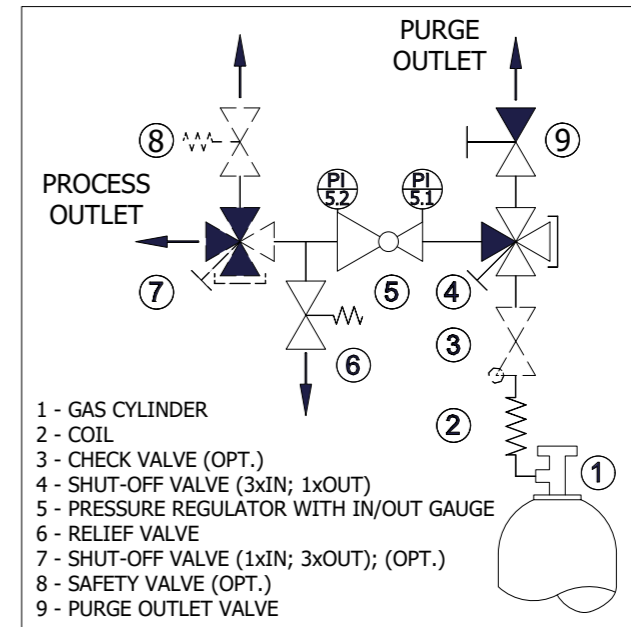
ORDERING INFORMATION

MSLLEX S PX X XX XX XX XX XXXX XXXX XXXX

STAGES: S - SINGLE STAGE	PURGE & RELIEF CONNECTION: N14F - NPT1/4" FEMALE MORE VERSIONS ON LIST OF CONN.
OPTIONS: P0 - HP PURGE VALVE + LP WITHOUT PS - HP PURGE VALVE + LP SHUT-OFF VALVE	PROCESS OUTLET CONNECTION: N14F - NPT1/4" FEMALE M03S - COMPRESSION FITTING 3MM SS M06S - COMPRESSION FITTING 6MM SS MORE VERSIONS ON LIST OF CONNECTIONS
SPECIALS: 0 - WITHOUT C - CHECK VALVE S - SAFETY VALVE U - CHECK VALVE + SAFETY VALVE	PROCESS INLET CONNECTION: N14F - NPT1/4" FEMALE M14M - M14X1,5 MALE
INLET PRESSURE: D1 - 12 BAR	OUTLET GAUGE TYPE: BT - BOURDON TUBE I2 - INDUCTIVE CONTACT I2 R2 - REED CONTACT R2 I1 - INDUCTIVE CONTACT I1 R5 - REED CONTACT R5
OUTLET PRESSURE: AY - 1 BAR AX - 2 BAR	INLET GAUGE TYPE: BT - BOURDON TUBE I1 - INDUCTIVE CONTACT I1 R5 - REED CONTACT R5

LIST OF CONNECTIONS

- N14F - NPT1/4" FEMALE
- M03S - COMPRESSION FITTING 3MM SS
- M06S - COMPRESSION FITTING 6MM SS
- M08S - COMPRESSION FITTING 8MM SS
- M10S - COMPRESSION FITTING 10MM SS
- M12S - COMPRESSION FITTING 12MM SS
- IX2S - COMPRESSION FITTING 1/8" SS
- IX4S - COMPRESSION FITTING 1/4" SS
- IX6S - COMPRESSION FITTING 3/8" SS
- IX8S - COMPRESSION FITTING 1/2" SS



TECHNICAL SPECIFICATION

MATERIAL OF GAS WETTED PARTS:
REGULATOR BODY: STAINLESS STEEL (1.4404)
REGULATOR DIAPHRAGM: HASTELLOY (C276)
REGULATOR SEAL: PCTFE
REGULATOR SEAT: EPDM

REGULATOR POPPET: STAINLESS STEEL (1.4404)
RELIEF VALVE SEAT: EPDM
SAFETY VALVE SEAT: EPDM
SAFETY VALVE OUTLET CONNECTION: NPT1/2"F

INLET PRESSURE: MAX.12 BAR
FLOW NOMINAL: 3 Nm³/h (N2)
ACC. TO ISO 7291 AT 2 BAR OUT

GAS TYPE
DEFINED BY PRODUCT LINE AND TYPE
(CHECK APPROVED GAS TYPE IN DATASHEET)

SST LINE:
INCLUDING CORROSIVE GASES
INCLUDING TOXIC GASES

Polotovar Raw material Material Material Komentář Notice Datum vypracování Creation date Vytvořitel Created Kontroloval Inspected Schválil Approved Identifikační Item Class	Rozměr polotovaru Dim. of raw material Material Material Opracování / Machining Měřítko / Scale	Povrchová úprava Surface finish Starý výkres Old drawing Kritický rozměr značen Critical dimension marked Neto rozměry / Dim. without tol. ISO 2768 m,K Měřítko / Scale 2:3	Hmotnost Weight 5.04 kg List / Počet listů Sheet / Number of sheets 1/2 MANIFOLD SST-LINE LOW FLOW LE MAN SST 020Q LE SINGL SGL PROPURGE ece MSLLEXSP
09.04.2021 Iris Baier L. Ondracek Ing. Z. Hajek B: Standard			



EXAMPLE: MSLLEXSPS0D1AXBTTBN14FM06SM06S